

DATASHEET

HP750 PRESSURE BLOWER

DESCRIPTION:

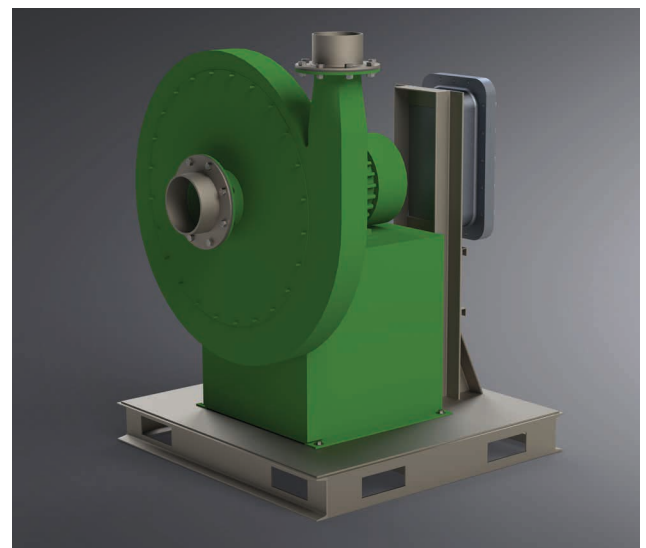
The HP750 is a high pressure centrifugal blower designed for 750 CFM @ 76" of water. Direct-coupled impeller means no belts! Comes with Class 1, Div 2 motor and TEXP Control Box. Excellent for vapor scrubber and carbon bed systems.

SPECIFICATIONS

- Class 1, Div 2 Motor
- 480V (30 HP)
- Includes Control Box with Main Disconnect
- Skid Mounted
- Vapor Inlet: 8" Flange
- Vapor Outlet: 6" Flange
- Includes Manual Damper Valve on Outlet
- Capable of 750 CFM @ 76" of water

PRODUCT USES & APPLICATIONS

- Vapor Scrubber Systems
- Carbon Adsorption Systems
- Tank Cleaning Operations
- Fume Hood Vapor Control
- Process Vapor Control



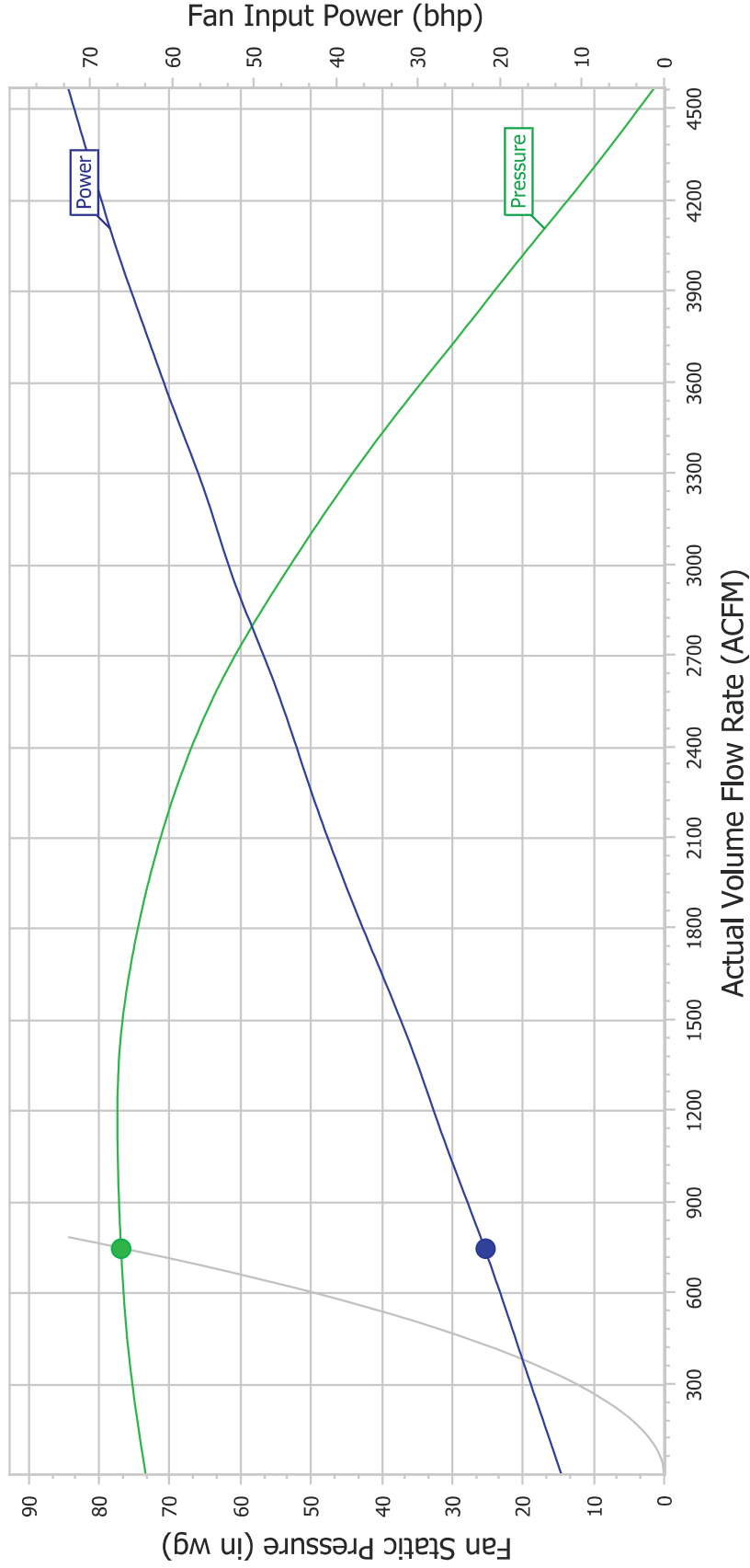


The New York Blower Company
Fan-to-Size
Fan Selection Detail

Product: Type HP Pressure Blower
 Material: Aluminum
 Fan Size: 31006
 Arrangement: 4
 Wheel Type: Radial (shrouded) - ALM
 Options: None

Actual Volume Flow Rate: 750 ACFM
 Fan Static Pressure: 76.9 in wg
 Speed: 3550 rpm
 Power: 21.9 bhp

Inlet Temperature: 70 °f
 Altitude: 0 ft
 Density: 0.0750 lb/ft³
 Outlet Velocity: 3827 ft/min



*This configuration is NOT compliant with CEC regulations (NOT suitable for use in California), FEI: 0.89.