

# DATASHEET

## HP750-VFD PRESSURE BLOWER

### DESCRIPTION:

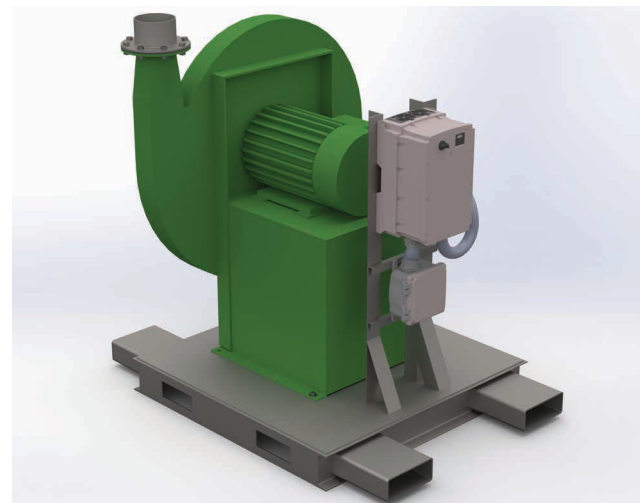
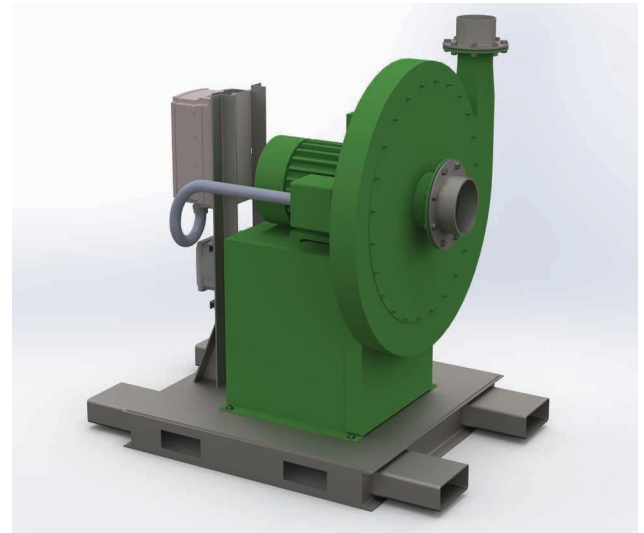
The HP750-VFD is a high pressure centrifugal blower designed for 750 CFM @ 76" of water. Direct-coupled impeller means no belts! This unit is VFD driven for accurate flow output. Excellent for vapor scrubber and carbon bed systems.

### SPECIFICATIONS

- Class 1, Div 2 Motor
- 480V (30 HP)
- VFD Controller (Weatherproof) - 480V Input
- Skid Mounted
- Vapor Inlet: 8" Flange
- Vapor Outlet: 6" Flange
- Capable of 750 CFM @ 76" of water

### PRODUCT USES & APPLICATIONS

- Vapor Scrubber Systems
- Carbon Adsorption Systems
- Tank Cleaning Operations
- Fume Hood Vapor Control
- Process Vapor Control



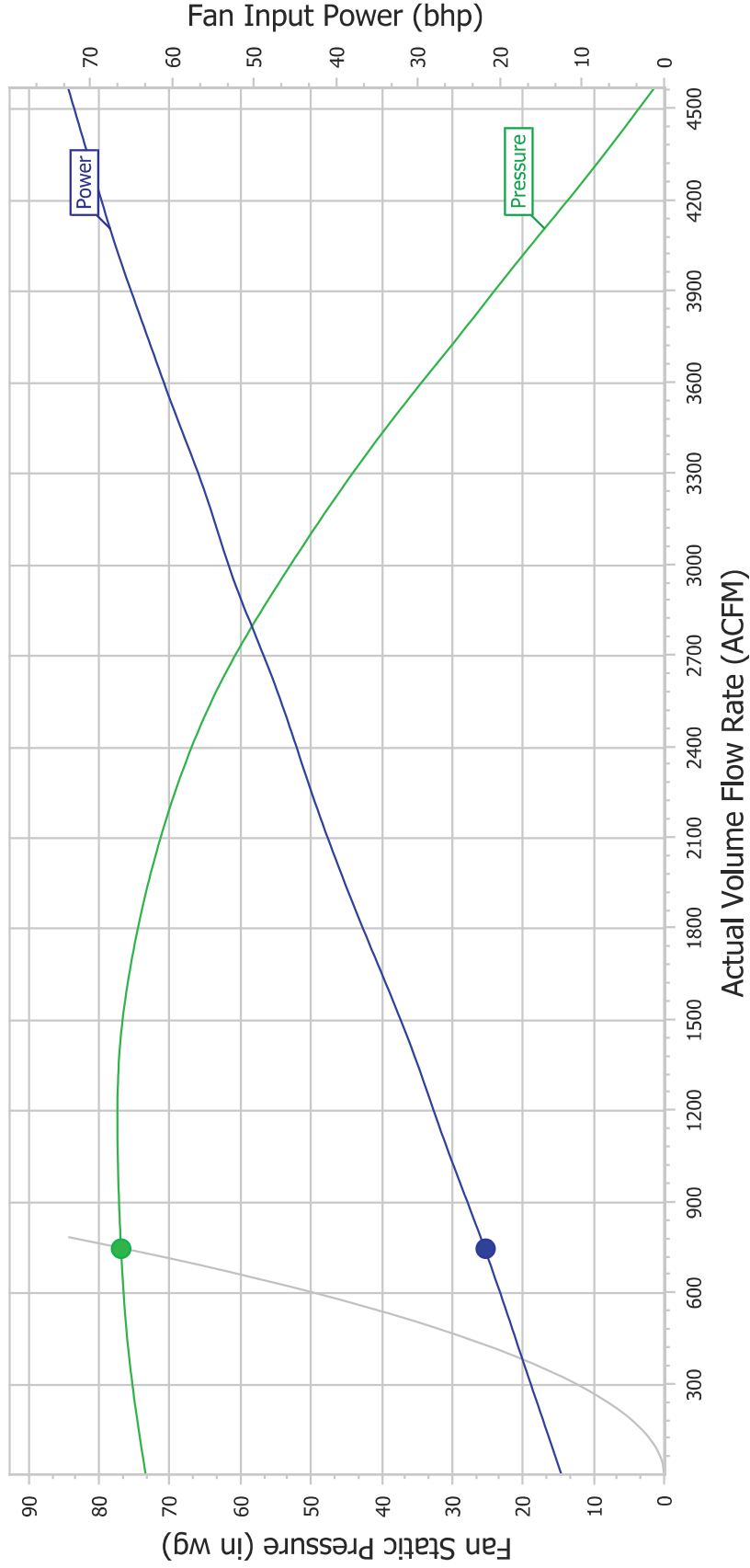


**The New York Blower Company**  
**Fan-to-Size**  
**Fan Selection Detail**

Product: Type HP Pressure Blower  
 Material: Aluminum  
 Fan Size: 31006  
 Arrangement: 4  
 Wheel Type: Radial (shrouded) - ALM  
 Options: None

Actual Volume Flow Rate: 750 ACFM  
 Fan Static Pressure: 76.9 in wg  
 Speed: 3550 rpm  
 Power: 21.9 bhp

Inlet Temperature: 70 °f  
 Altitude: 0 ft  
 Density: 0.0750 lb/ft<sup>3</sup>  
 Outlet Velocity: 3827 ft/min



\*This configuration is NOT compliant with CEC regulations (NOT suitable for use in California), FEI: 0.89.